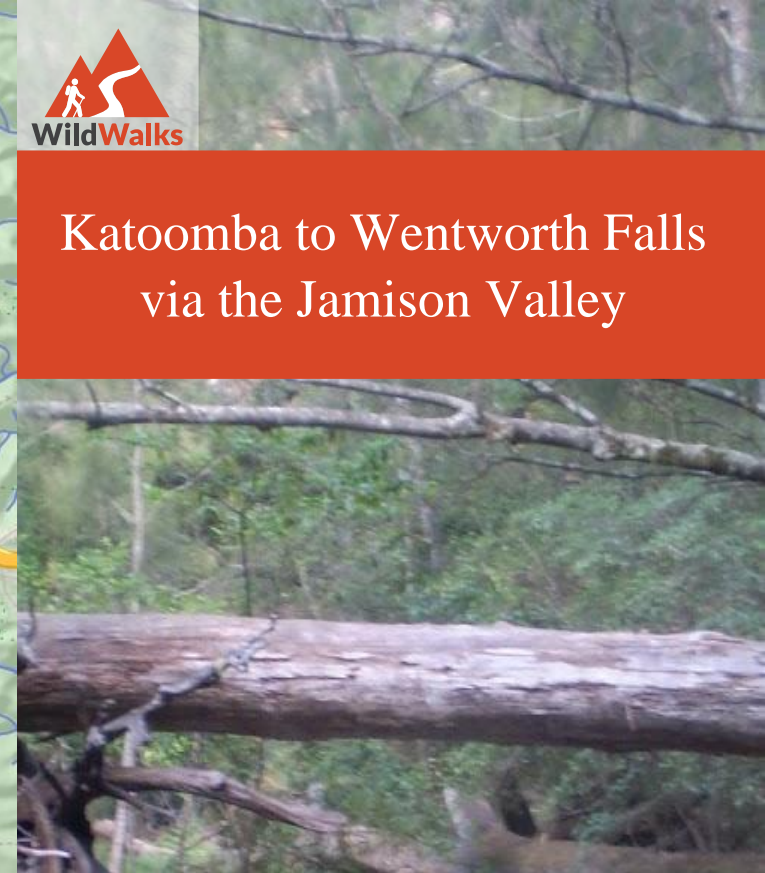
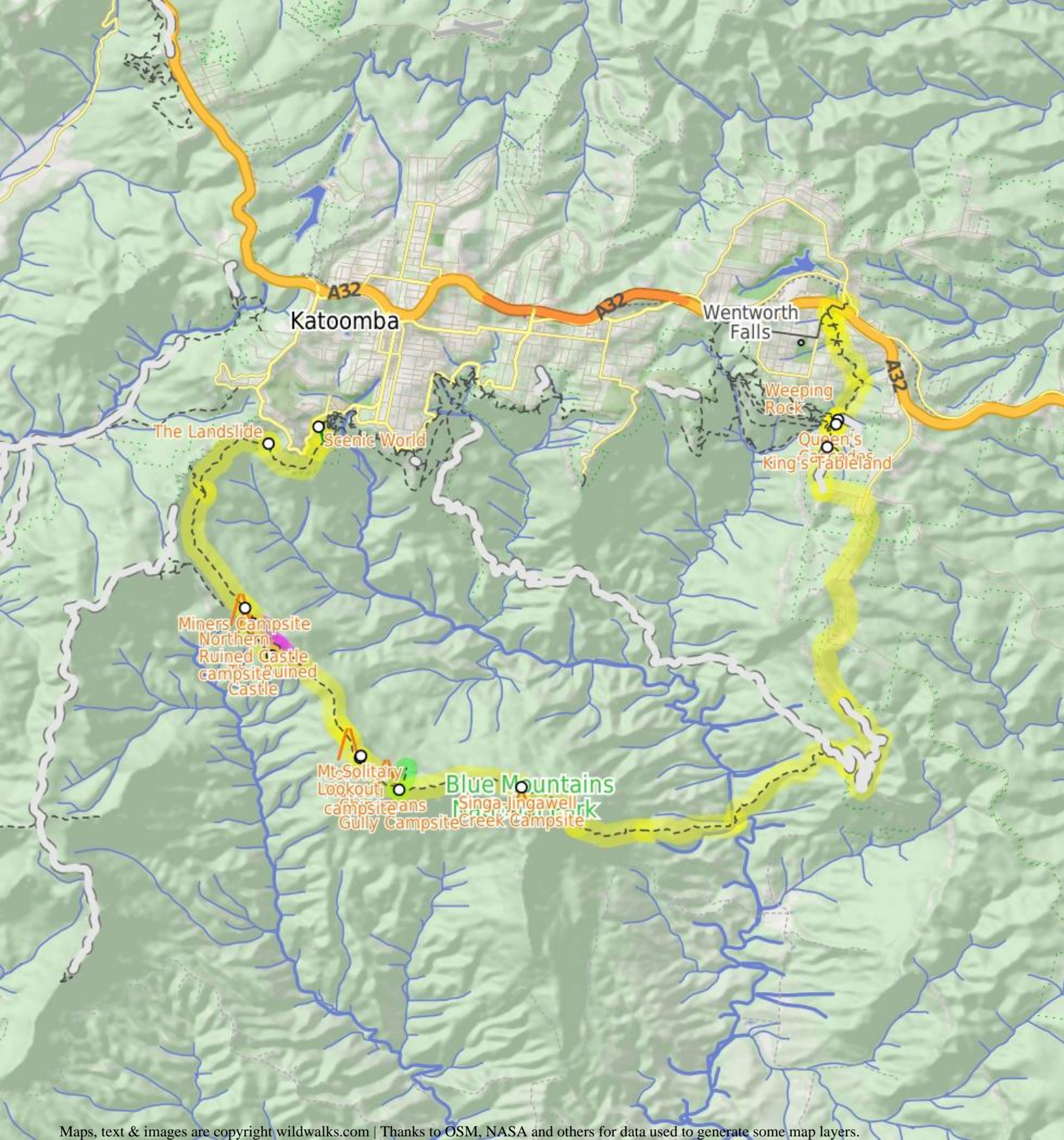



Katoomba to Wentworth Falls via the Jamison Valley



2 Days

Experienced only

5

29.2 km One way  2135m

This is the two day version of this popular and challenging walk. This walk passes popular sights including the Landslide, Ruined Castle, Mt Solitary and Wentworth Falls, and is a great way to explore the Jamison Valley. Water is rarely available at the campsite, with the Kedumba River being the only source of reliable water in the middle of this walk.

961m

150m

Blue Mountains National Park

Free Beacon Hire

A Personal Locating Beacon (PLB) is a hand-held device that, when triggered, sends a message to the emergency services with your location. The emergency services staff can then look at your trip intention forms and decide how best to help you. In the Blue Mountains, you can borrow these for no charge, just complete this [Trip intention form](#), and a borrowing form. The device can be picked up from: NPWS Office - Govetts Leap Rd Blackheath - 9am to 4pm 7 days Ph: 02 4787 8877 Katoomba Police Station - 217 Katoomba St Katoomba - Anytime Ph: 02 4782 8199 Springwood Police Station - 4 Jerseywold Avenue Springwood - Anytime Ph: 02 4751 0299 [More info](#).

Scenic World

Scenic World is one of the most renowned tourist attractions of Katoomba and the Blue Mountains. Located on the cliffs of the Jamison Valley, visitors can enjoy a ride on the Scenic Railway (the world's steepest incline railway) or the Scenic Cableway, into the Jamison Valley, and explore the Scenic Walkway from the base. Alternatively, the Scenic Skyway offers a bird's eye view over the valley, with a glass floor to enhance the experience. Scenic World also features a revolving restaurant, a cafe and a kiosk, in addition to the documentary theatre and souvenir shop. Rides can be purchased, starting from \$16 for adults and \$10 for children, and combination or family passes are available. [More info](#).

The Landslide

'The Landslide' is a large rockfall going into the valley approximately 100m. There is a good vantage point for the landslide from under the cliffs to the east, and a great but more distant view from Narrow Neck lookout. The landslide occurred in 1931 after a few days of rumbling. There has been much debate as to whether this event was helped along by erosion and coal mining in the area at the time.

Miners Campsite

This flat campsite beside the Federal Pass walking track about 2.2km south of the intersection at the bottom of the Golden Stairs. There is short constructed stone wall left over from when there area was habited by miners. The campsite is surrounded by a tall forest, bracken ferns and some nice fern trees. There is no water or facilities.

Before You walk

Bushwalking is fun and a wonderful way to enjoy our natural places. Sometimes things go bad, with a bit of planning you can increase your chance of having an enjoyable and safer walk. Before setting off on your walk check

- 1) Weather Forecast ([BOM Central Tablelands District](#))
- 2) Fire Dangers ([Greater Sydney Region](#))
- 3) Park Alerts ([Blue Mountains National Park](#))
- 4) Research the walk to check your party has the skills, fitness and equipment required
- 5) Agree to stay as a group and not leave anyone to walk solo

Think before you TREK

The 'Think before you TREK' program developed by NSW Police & NPWS promotes the benefits of planning ahead for your bushwalking trip by using an easy to remember acronym:

- T** Take adequate supplies of food, water, navigation and first aid equipment.
- R** Register your planned route and tell friends and family when you expect to return.
- E** Emergency beacon (PLB's) should be carried on walks with significant gaps in mobile coverage (check terrain profile).
- K** Keep to your planned route and follow the map and walking trails.

Topo Maps

The maps provided on wildwalks are helpful, but there are times where you may need maps covering a broader area. Maps that cover this walk include;

1:50 000 Map Series:Six Foot Track

1:25 000 Map Series:89302N JAMISON, 89301S KATOOMBA

1:100 000 Map Series:8930 KATOOMBA

Grade

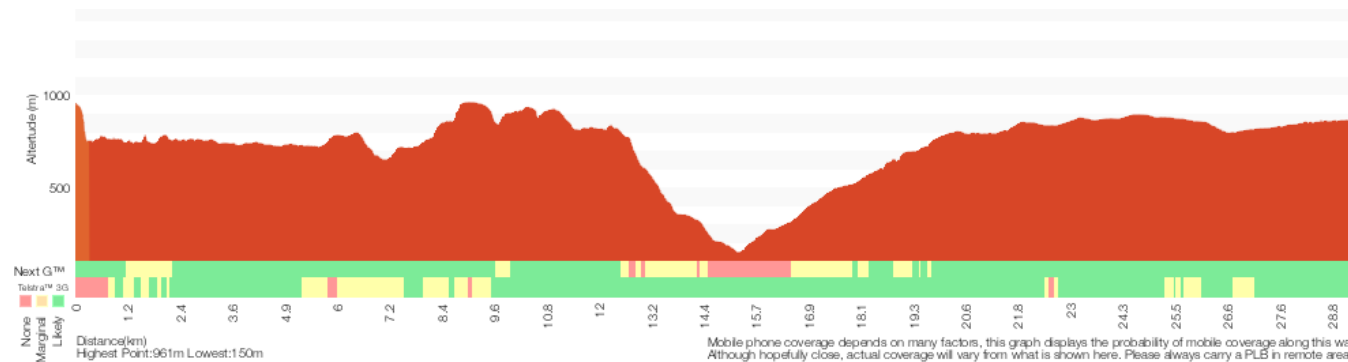
This walk has been graded using the AS 2156.1-2001. The overall grade of the walk is determined by the highest classification along the whole track.



Grade 5/6
Experienced only

Length	29.2 km One way
Time	2 Days
Quality of track	Rough unclear track (5/6)
Signs	No directional signs (5/6)
Experience Required	High level of bushwalking experience recommended (5/6)
Weather	Forecast, unforecast storms and severe weather likely to have an impact on your navigation and safety (5/6)
Infrastructure	No facilities provided (5/6)

*** This walk passes through very remote areas and sections have no visible track. At least one person in your group should have training and experience in off track walking and navigation. Even with these notes and a GPS these extra skills and equipment are required.**



Are you ready to have fun?

Please ensure you and your group are well prepared and equipped for all possible hazards and delays. Check park closures, weather information and Fire Danger Rating before setting out. Optional side trips and alternate routes noted are not included in this walk's overall grade, length or time estimate. Please allow extra time for resting and exploring areas of interest. The authors, staff and owners of wildwalks take care in preparing this information but will not accept responsibility for any inconvenience, loss or injury you may experience. Please take care, have fun - Happy Walking. **Experienced walkers only: This walk passes through very remote areas and sections have no visible track. At least one person in your group should have training and experience in off track walking and navigation. Even with these notes and a GPS these extra skills and equipment are required.**

Getting there You can get to Scenic World (gps: -33.7286, 150.301) by car or bus. Car: There is free parking available.

You can get back from Wentworth Falls Railway Station (gps: -33.7097, 150.3764) by car or train. Car: There is free parking available.

Find up to date and more information including; travel directions, weather, park closures and walker feedback at <http://wild.tl/ktwfvtyj>

0 | Free Beacon Hire

A Personal Locating Beacon (PLB) is a hand-held device that, when triggered, sends a message to the emergency services with your location. The emergency services staff can then look at your trip intention forms and decide how best to help you. In the Blue Mountains, you can borrow these for no charge, just complete this [Trip intention form](#), and a borrowing form. The device can be picked up from: NPWS Office - Govetts Leap Rd Blackheath - 9am to 4pm 7 days Ph: 02 4787 8877 Katoomba Police Station - 217 Katoomba St Katoomba - Anytime Ph: 02 4782 8199 Springwood Police Station - 4 Jerseywold Avenue Springwood - Anytime Ph: 02 4751 0299 [More info.](#)

0 | Scenic World

Scenic World is one of the most renowned tourist attractions of Katoomba and the Blue Mountains. Located on the cliffs of the Jamison Valley, visitors can enjoy a ride on the Scenic Railway (the world's steepest incline railway) or the Scenic Cableway, into the Jamison Valley, and explore the Scenic Walkway from the base. Alternatively, the Scenic Skyway offers a bird's eye view over the valley, with a glass floor to enhance the experience. Scenic World also features a revolving restaurant, a cafe and a kiosk, in addition to the documentary theatre and souvenir shop. Rides can be purchased, starting from \$16 for adults and \$10 for children, and combination or family passes are available. [More info.](#)

0 | Scenic World

(1.6 km 1 hr 12 mins) From Scenic World, this walk goes down the cliffs using the Scenic Railway. Hang on tight! This 415m-long journey is the world's steepest railway. At the bottom, the track comes to a great viewing platform of the valley. Use of the railway costs \$10 for adults and \$5 for children one-way. Last train normally at 4:45pm (opens at 9am)

Turn left : From the bridge over the bottom of the Scenic Railway, this walk follows the signs to 'scenic walkway', passing a replica of a mining cart, as well as an old mine. Just past this, the walk comes to a pipeline that runs down the hill collecting fresh water, signposted as drinkable. Continuing past the old mine shafts along the boardwalk, this walk comes to an intersection with a bush track going slightly off to the right. This is signposted as the way to the Landslide.

Continue straight: From the intersection, the walk follows the wide track and signposts towards the 'landslide' (keeping the cliffs on the right). The walk winds along a bush track with small boulders strewn along it. There are a

number of old mine shafts just off the track and some interesting historical items. The track continues under Malaita Point before breaking out of the vegetation to a worthy view of the valley, just before the landslide. As the track comes to the old landslide site, it becomes rougher with plenty of boulders over the track. There are also excellent views of the cliffs above and the landslide as the vegetation is quite sparse here. [More info.](#)

1.64 | The Landslide

'The Landslide' is a large rockfall going into the valley approximately 100m. There is a good vantage point for the landslide from under the cliffs to the east, and a great but more distant view from Narrow Neck lookout. The landslide occurred in 1931 after a few days of rumbling. There has been much debate as to whether this event was helped along by erosion and coal mining in the area at the time.

1.64 | Landslide

(1.6 km 42 mins) Continue straight: From the eastern side of the Landslide, the walk heads across the face of the landslide (keeping the cliff on the right). At this point, the track is quite rough, with frequent boulders making it a slight scramble. On the other side of the landslide, the track narrows and becomes a flat bush track that follows the base of the cliffs. The surrounding trees become quite dense again, adding quite an ambiance to the area. The walk heads along the bottom of the Narrow Neck escarpment, until coming to an intersection with a set of stairs off to the right, signposted as the 'Golden Staircase'.

3.19 | Bottom of Golden Staircase

(2.3 km 51 mins) Continue straight: From the intersection, this walk follows the 'Federal Pass - Ruined Castle' sign along the flat wide track, keeping the valley to your left. This track follows the old horse-drawn coal tram route. The track leads through a tall rainforest filled with fern trees and vines, with the occasional lyrebird. After about 1.3km the forest opens up, letting in more light and exposing some distant filtered views. After wandering through the more open forest for about 250m, the track passes a small campsite (on the right). This walk continues for another 700m along the main track through the bracken fern forest to find a larger campsite (just up to the right) with a short stone wall on one side).

5.45 | Miners Campsite

This flat campsite beside the Federal Pass walking track about 2.2km south of the intersection at the bottom of the Golden Stairs. There is short constructed stone wall left over from when there area was habited by miners. The campsite is surrounded by a tall forest, bracken ferns and some nice fern trees. There is no water or facilities.

5.45 | Miners Campsite

(300 m 7 mins) Continue straight: From the miners campsite, this walk follows the clear track south-west, keeping the valley to your left. The mostly flat track narrows a bit as it leads past a large flat area (on your right) after about 140m, then past a smaller campsite a short distance later. The track then winds through the forest for another 100m to come to a clearing and signposted three-way intersection, where there is a 'Federal Pass - Katoomba' sign pointing back along the track. (There is a campsite a few metres further on and to the left.)

5.75 | Northern Ruined Castle campsite

A short distance south east of the intersection with the Federal Pass and the northern access track to the Ruined Castle, is a fairly large basic campsite. There are two main flat areas for camping, both with fire scares. The area is surround with tall trees and ferns. There is no water nor any other facilities.

5.75 | Alternate Route Northern Ruined Castle campsite to

(930 m 23 mins) Continue straight: From the intersection, this walk follows the 'Mount Solitary' sign past the campsite (on your left) and past the 'Warning - Remote area indistinct route steep terrain - Exposed climbing loose surfaces - No reliable water Carry plenty Sterilise any water found on route' sign. This walk continues along the mostly flat track, passing through a tall turpentine forest for about 450m where you come into view of a campsite (down to your left). The walk continues a short distance further, coming to an intersection where there is a fair amount of coal on the ground, a campsite down to your left and the entrance to an old small coal mine (behind a rock) on your right. Continue straight: From the intersection, this walk follow the main track south-east, initially keeping the campsite and valley to your left. The track initially heads down a short rocky section then flattens out to pass a large square boulder after about 100m. The track continues through ferny forest for just over 200m, then passes another campsite (down a steep hill to your left), and about 30m further on, comes to a signposted intersection where a 'Katoomba' arrow points back along the track. Now Continue straight to rejoin the main walk .

5.75 | Northern Ruined Castle campsite

(730 m 20 mins) Turn right: From the intersection, this walk follows the 'Ruined Castle' sign uphill along the eroded track and soon passes the yellow 'Warning - Remote area indistinct route steep terrain - Exposed climbing loose surfaces - No reliable water Carry plenty Sterilise any water found on route' sign. The track winds up the wide valley getting steeper as it goes, climbing up onto the main ridgeline. Here the walk turns left (away from the view of Castle Head) and follows the rocky track more gently uphill for about 220m to pass under the side of a large boulder. The track continues along the narrow ridge for about 280m, with some filtered views past another large boulder to the base of the tall Ruined Castle summit. Here the walk heads gently down a bit (keeping the rock wall to your left), past a crevice, then follows the main track to the other (southern) side of the summit. The track then heads up again to find a number of rocky pinnacles.

6.48 | The Ruined Castle

A formation jutting out of the Jamison Valley, the Ruined Castle has great views of the Jamison Valley from Katoomba to Leura. It is also possible to see Mt Solitary to the south-east.

6.48 | Ruined Castle

(390 m 12 mins) Continue straight: From near the summit of Ruined Castle, this walk heads south-east along the main ridgeline, initially keeping the rock wall to your left. The track follows the rocky ridgeline gently downhill and after about 70m the track starts to become much steeper. The track winds down, flattening out for a short time before continuing steeply down to a sign posted three-way intersection just beyond the 'Ruined Castle to Mount Solitary' map. There is a 'Ruined Castle' arrow here, pointing back up the hill.

6.87 | Intersection South of Ruined Castle

(1.3 km 35 mins) Turn right: From the intersection, this walk follows the 'Mount Solitary' sign gently downhill along the fairly narrow track, keeping the main valley to your left. After about 300m, the more eroded and rocky track begins to climb the ridge and after climbing for just shy of 300m, the track flattens out and passes a couple of small clearings - the second clearing is just past where the track leads downhill. Just after the second clearing (used as a campsite), the track begins to climb up the ridge again. This track climbs up a few rocky eroded section and soon comes to the base of a tall series of rockwalls - the Korrowall Knife-edge.

8.2 | Bottom of Korrowall Knife-edge

(200 m 12 mins) Continue straight: From the base of the rocks, this walk

starts the arduous climb up the Korrowall Knife-edge. Ascending the Korrowall Knife-edge is a hard climb, vertical in places and much of the climbing will involve both hands - some people use ropes to help lift heavy packs. This walk initially heads around to the left of the first boulder to head up through the eroded steep valley between the rocks. The walk continues to scramble up the side of the rocks, then climbs vertically up a crack in the rock to a small flat area, offering the first distant view for this climb. The walk continues by climbing up a 3m rock wall, then up the eroded track before climbing up through the obvious gap in the next rock wall. At the top of this climb is another great view and a short distance further up, this faint track passes a rock with a hole/cave (on your right). From here, the walk follows the worn track up through a couple more rock gullies, still generally keeping the rock wall to your right (and passing a couple of arrows). This brings the walk to an exposed flat area, with red dirt and fantastic views. The walk continues by climbing up through the next eroded gully to the top of the Korrowall Knife-edge, where there is a large rock wall on your left.

8.4 | Mt Solitary Lookout

This informal lookout is on top of the 'Koorowall Knife Edge' on the western side of Mount Solitary. The lookout boasts some fantastic views over the Jamison Valley and to the west - this is well-worth the scramble to the top. There is some natural shelter and shade to rest amongst, and some people have camped here in the past (although better camping is available in Chinamans Gully).

8.4 | Top of Korrowall Knife-edge

(450 m 19 mins) Continue straight: From the top of Korrowall Knife-edge, this walk heads south following a worn track that initially heads steeply down beside the large rock wall (keeping the wall to your left). The track passes a small cave at the base of this cliff then climbs up beside the cliff to the top of the ridge, past the rocks to find a view to the left. Here the faint track veers right to follow along the base of another cliff. The walk then heads up a short but steep climb, where a short flat walk leads to a fantastic view on your right, looking over Cedar Creek valley to Narrow Neck. After following this faint track a further 60m south along the base of another cliff, this walk then climbs up the middle of a steep gully - just past the top of this climb, the track bends sharp left and leads up the hill for about 50m to enter a lovely she oak forest, a clearing and the Corowal Plateau campsite.

8.85 | Corowal Plateau campsite

The Corowal Plateau campsite is an informal campsite at the north eastern end of Mount Solitary. The clearing is set among some pleasant casurina forest. There are a few campfire scars, although this is in a fuel stove only area. There is plenty of flat area but there is no water source or any other facilities.

8.85 | Corowal Plateau campsite

(820 m 19 mins) Veer right: From the campsite, this walk heads south-east, following the mostly flat track along the top of the ridge through the she oak forest. After about 200m, this walk enters a banksia forest, and continues along the flat ridge (past a few impromptu campsites) for about 400m, where the track begins to head downhill. The track winds downhill for about 170m (passing a track on your left) and comes to a large flat saddle and clearing with a large rock wall, Chinamans Gully Campsite.

9.67 | Chinamans Gully Campsite

Next to a small creek (often dry) and sheltered from the winds, this campsite is great for those wanting to camp on Mt Solitary. For daywalkers, this spot offers the chance to rest under the overhangs of the cliffs before continuing. Water here is not reliable, please note that in the past water was more reliable, but not so now. Please carry plenty of water. There is a camping area

near the beginning of the track and there are also a few spots along the gully where people have camped previously.

9.67 | Optional sidetrip to Chinamans Gully view

(390 m 8 mins) Turn left : From Chinamans Gully campsite, this walk follows the track north, keeping the rock walls to you right. The track soon starts to head gently downhill, keeping the small gully on your left and passing through a number of sandstone camping caves. The track then heads left to follow the gully downhill for about 150m, and comes to a small clearing and campsite at the junction of two creeks. The track then crosses the side creek and heads gently up the side of the hill, coming to an unfenced filtered view up the Kedumba Valley to Katoomba. At the end of this side trip, retrace your steps back to the main walk then Turn left.

9.67 | End of day 1

This is the planned overnight stay for the end of day 1, happy camping.

9.67 | Chinamans Gully campsite

(1.8 km 55 mins) Continue straight: From the large campsite at the top of Chinamans Gully, this walk heads east up the gully, initially keeping the large main rock to your right (and Chinamans Gully to your left). The track leads up the short gully to the top of the rock, where there is a filtered view (to your right). This walk follows the track as it winds up the hill for about 130m, passing another great view (on your right). The track then mostly flattens out, following the top of the ridge for another 500m to pass a small campsite. About 200m past this campsite, the track then passes a short track (on your left that provides great unfenced views over the Kedumba Valley). Over the next 400m, the track continues east, fairly closely to the northern face of Mount Solitary, with the occasional gap in the trees to provide great views. The track alternately rises and falls, and passes the (not very noteworthy) summit of Mount Solitary. From here, the track starts to lead down a ridge, passing a few filtered views over about 500m, then comes to a large campsite, with a rock platform (up to the left) that provides even more views.

11.48 | Singa-Jingawell Creek Campsite

Singa-Jingawell Creek Campsite is near the northern wall, partway across the eastern half of Mount Solitary. The informal campsite sits in a pleasant little depression beside the small, usually dry creek. There is a rock platform at the top of the campsite that provides great views up the Kedumba River towards Katoomba. There is a large fire scare, but this is in a fuel stove only area, so please avoid lighting any campfires. The creek gets a small amount of water in it after rain, but it does not last long, so always best to bring your own.

11.48 | Singa-Jingawell Creek Campsite

(1.2 km 29 mins) Continue straight: From Singa-Jingawell Creek Campsite, this walk heads south-east, initially keeping the rock wall to your left. After about 80m, this walk stays left (ignoring the track that crosses the creek). Here the track climbs the fairly short hill then follows the ridgeline for just over 100m to climb up the gully beside the large rock formation, then climbs up a rock wall (about 2-3m tall). There are some views (to the right) over Singa-Jingawell Creek valley. The rocky track continues east for about 500m and then turns right, coming to a small ridgetop campsite just over 100m later. Shortly after this campsite (just before a large rocky outcrop), the walk turns left and starts to lead down the ridgeline, quite steeply in places, for about 250m and finds an intersection in a saddle, with a steep gully on your left and a short climb to a rocky viewpoint (and logbook) straight ahead.

12.67 | Solitary Pass

(1.2 km 40 mins) Turn left : From the saddle, this walk follows the eroded track very steeply down the gully to the north. The track soon bends right around the base of the cliff to find the ridge. The walk follows the steep eroded track down the ridge for about 300m to where the track flattens out for a short time, then turns left to wind down through the casuarina forest. The track winds down through this casuarina forest, very steeply and slippery in places for about 800m, (turning right at the faint track intersection partway down) heading east to a flat area, campsite and signposted intersection, where a 'Mount Solitary' sign points back up the hill.

13.87 | Int of Kedumba Camping and Solitary Tracks

(1.4 km 31 mins) Continue straight: From the intersection and campsite, this walk follows the 'Kedumba Pass' and 'Kedumba River' signs west, gently downhill along the ridge. After about 600m, just after passing between some boulders, the track starts to steepen and leads down towards the views of the cliff (on the far side of the valley), then mostly flattens out again. This track then steeply descends again, until the track bends right and comes to a beach on the south (western) side of the Kedumba River. Here the walk crosses the

river (usually lower-shin deep, this river has a large catchment and may be impassable after rain). Once on the other side, this walk comes to a rocky beach and climbs over a large fallen tree to see the main track continuing ahead and a little to the left (sometimes marked with a cairn). There is a place that has been used as a campsite a short distance upstream (not safe if there is a chance of the river rising), or there are a few alternative places to camp up the embankment.

15.27 | Kedumba River

(2.2 km 1 hr 8 mins) Continue straight: From the Kedumba River crossing, this walk follows the track (sometimes marked with a rock cairn) north, up the embankment and away from the river. The track soon bends left and leads around the side of the flat area with a nice blue gum stand. The track then starts to climb, steeply at first, for about 400m (passing some views back to the cliffs of Mount Solitary) before flattening out. The track then leads gently up through the open forest for about 800m, where it then leads gently down to cross a small gully. The track continues up the main ridge for another 400m then along the side of a narrow steep gully (on your left). Near the top of this gully, the track turns left to cross the now small gully. The track now leads north for a little while around the ridge and climbs the hill for another 500m, passing through a ferny forest, to find a yellow 'warning' sign. From this sign, the track leads left and up the bank, coming to an intersection with the Sublime Point management trail, where a 'Mount Solitary' sign points back along the track.

17.46 | Int of Kedumba River track and Sublime Point trail

(3.6 km 1 hr 36 mins) Turn right: From the intersection, this walk follows the 'Wentworth Falls' sign uphill along the wide management trail as it bends left. The trail leads past a small cave (on your left) and further uphill, the trail bends right. Soon after, the trail leads down a short hill to come to a clear three-way intersection with a 'Leura via Fern Bower' sign pointing back along the trail.

Turn left : From the intersection, this walk heads north, uphill along the management trail, following the sign to 'Wentworth Falls'. After the uphill section, the trail turns to the right and starts heading steeply up between the gap in the cliffs. The walk passes a locked gate and continues steeply up the hill until reaching the top, where the track curves around to the bends again sharply to the left - there are some great views from here. From the top of the cliffs, the track zigzags north along a relatively flat management trail until coming to the end of Kedumba Valley Rd, marked by a large towering gateway with small track around it.

21.04 | End of Kedumba River Rd

(5.2 km 1 hr 41 mins) Continue straight: From the end of Kedumba River Rd at the large archway, this walk heads north along the wide dirt road. This gradually curves around left (at the junction with Kings Tableland Rd, unsignposted), becoming Tableland Rd. The walk continues along Tableland Rd for some time, before coming into a more suburban area and turning left into Hordern Rd. At the far end of Hordern Rd, there is a 'T' intersection with a dirt road.

Turn right: From the end of Hordern Rd, this walk heads north along the management trail, away from the power lines, and after approximately 100m passes a large wire gate. Another 100m on from here, the trail passes a large green gate and sign saying 'Kings Tableland Track'. After this, the flat management trail continues until coming to an intersection with another management trail, signposted as the 'Rocket Point Track'.

26.21 | King's Tableland

The first point of Aboriginal and European contact in the Blue Mountains, King's Tableland is a significant Aboriginal meeting spot. Historical and cultural sites on the tableland include open campsites, occupation shelters,

axe grinding grooves, stone arrangements and art sites, including cave paintings and rock engravings.

26.21 | King's Tableland Intersection

(510 m 13 mins) Veer left: From the intersection, this walk follows the 'Rocket Point Track' sign north along the smaller management trail. As the track begins to go downhill, it narrows into a bush track. The track gently winds along until coming to an intersection with another bush track, marked by signs pointing to 'Rocket Point' and 'Wentworth Falls'.

Turn right: From the intersection, this walk heads east following the 'Wentworth Falls' sign down the narrow track towards the creek. The track turns left when it comes to a point above the creek and then follows this creek downstream to come to an intersection marked with a 'Round Walk' signpost.

Turn right: From the intersection, this walk follows the track away from the 'Round Walk' sign to zigzag down the hill a short distance to the well-managed and fenced track below (marked with a 'Rocket Point Circuit' pointing back up).

Turn right: From the intersection, this walk keeps the handrail on the left and cross a small creek using the stepping stones. The track soon leads to a large pool, Queen's Cascades and a fenced creek crossing, the top of Wentworth Falls.

26.73 | Queen's Cascades

Queen's Cascades are a lovely set of falls on the Jamison Creek at the top of Wentworth Falls. The creek heads down the wide, two-stage cascades into a sandy pool. From the pool, the water flows between the stepping stones, under the fence and down the very tall Wentworth Falls. There are also great views to Sublime Point across the valley.

26.73 | Top of Wentworth Falls

(100 m 2 mins) Continue straight: From top of Wentworth Falls, this walk crosses the creek on the stepping stones keeping the view to the left (the creek may be impassable after rain). The walk heads up the log steps (passing some more nice views of Jamison Creek) to soon come to a three-way intersection, with a sign pointing back to 'Wentworth Falls' and 'Wentworth Pass'.

Turn right: From the intersection, this walk follows the 'Weeping Rock Circuit' and 'Darwins walk' signs up a few steps and between the rocks. The track soon leads to a great view of Weeping Rock, then heads down some steps onto a slippery rock platform, beside a pool at the base of Weeping Rock waterfall.

26.83 | Weeping Rock

Weeping Rock is a waterfall on Jamison Creek, upstream of Wentworth Falls in the Blue Mountains National Park. The water falls over the wide circular top overhang, to then cascade down the rocks to a pool below. A staircase beside the falls helps walkers view this waterfall from different angles. This is a nice cool spot on hot days. The rocks are slippery and there are no fences, care is needed.

26.83 | Weeping Rock waterfall

(40 m 1 mins) Continue straight: From the bottom of Weeping Rock, this walk heads up the metal staircase (with the falls to the right). At the top of the falls, the track continues upstream, across the slippery rock platform, keeping the lovely view of Jamison Creek to the right. The track soon heads up some steps to an intersection with 'Darwins Walk' and a sign pointing back to 'Weeping Rock Circuit'.

26.86 | Int of Charles Darwin and Weeping Rock Tracks

(2.7 km 51 mins) Veer right: From the intersection, this walk heads alongside

Jamison Creek (creek to the right) following the signs along the Charles Darwin Walk. The track soon crosses two small streamlets and continues up the main creek along a mixture of bush track and boardwalk. This passes a great section of overhanging cliff on the other side of the creek. After this, the track rises slightly before going down to an intersection with a track signposted as the way up to Fletcher St, on the left.

Continue straight: From the intersection, this walk heads upstream beside the creek. This track goes along a mixture of boardwalk and bush track until continuing on a long section of boardwalk. The walk crosses the creek and goes up a steep set of stairs, then past a beautiful section of creek where the water cascades down the rocks. Shortly the cascades, the track crosses the creek using a foot bridge and comes to a signposted intersection with 'Parkes Street' track (on the left). From the intersection, this walk follows the clear track upstream (keeping the creek through the bush, on the right). The track bends right passing a bench seat and crossing the creek on a footbridge. On the other side of the bridge the walk climbs the stairs then gently meanders along the side of the creek till coming to a clearing. On the other side of the clearing the walk comes to an intersection just before the pipe bridge.

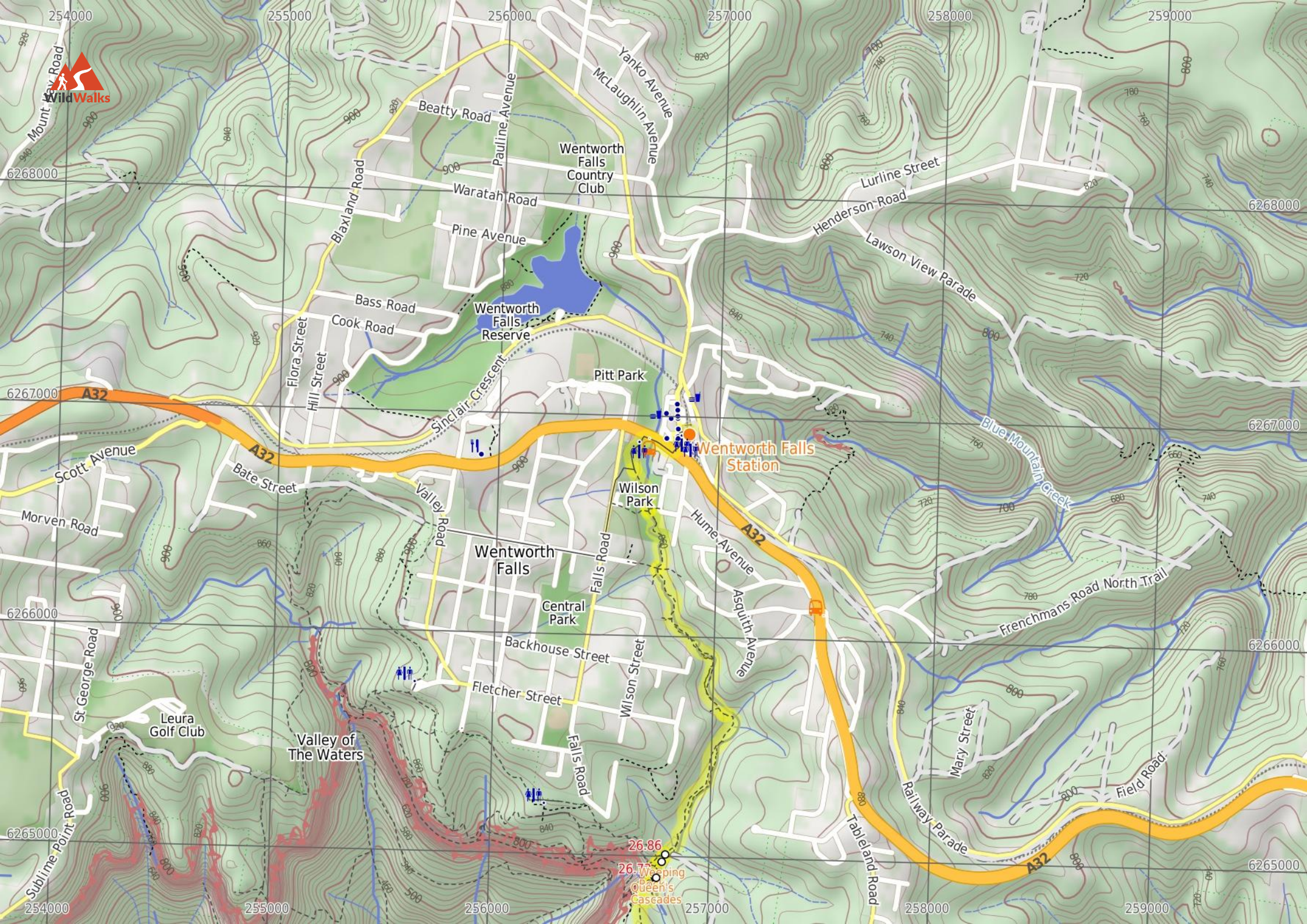
Continue straight: From the intersection, this walk follows 'Village' sign along the track and under the large pipeline (keeping Jamison Creek on the left). The track meanders alongside the creek over some timber platforms and through a lovely Banksia grove. After a short time the walk passes a 'Charles Darwin walk' sign and comes to an intersection with a timber bridge on the left of the track.

Turn right: From the intersection, this walk heads up the stairs (away from the bridge and creek) and turns left. The walk almost immediately comes to an intersection with a set of stairs (heading up to Page Ave on the right) and a sign pointing to 'Wilson Park'.

Continue straight: From the intersection, this walk follows 'Wilson Park' and 'Village' signs down some steps and along the track (keeping the creek to the left). The track soon passes a bush regeneration information sign and heads into an open pine forest. The walk then crosses the creek on a small timber bridge and heads up the hill. Soon the track passes under the 'Charles Darwin Walk' arch and enters Wilson Park (just next to the tennis courts).

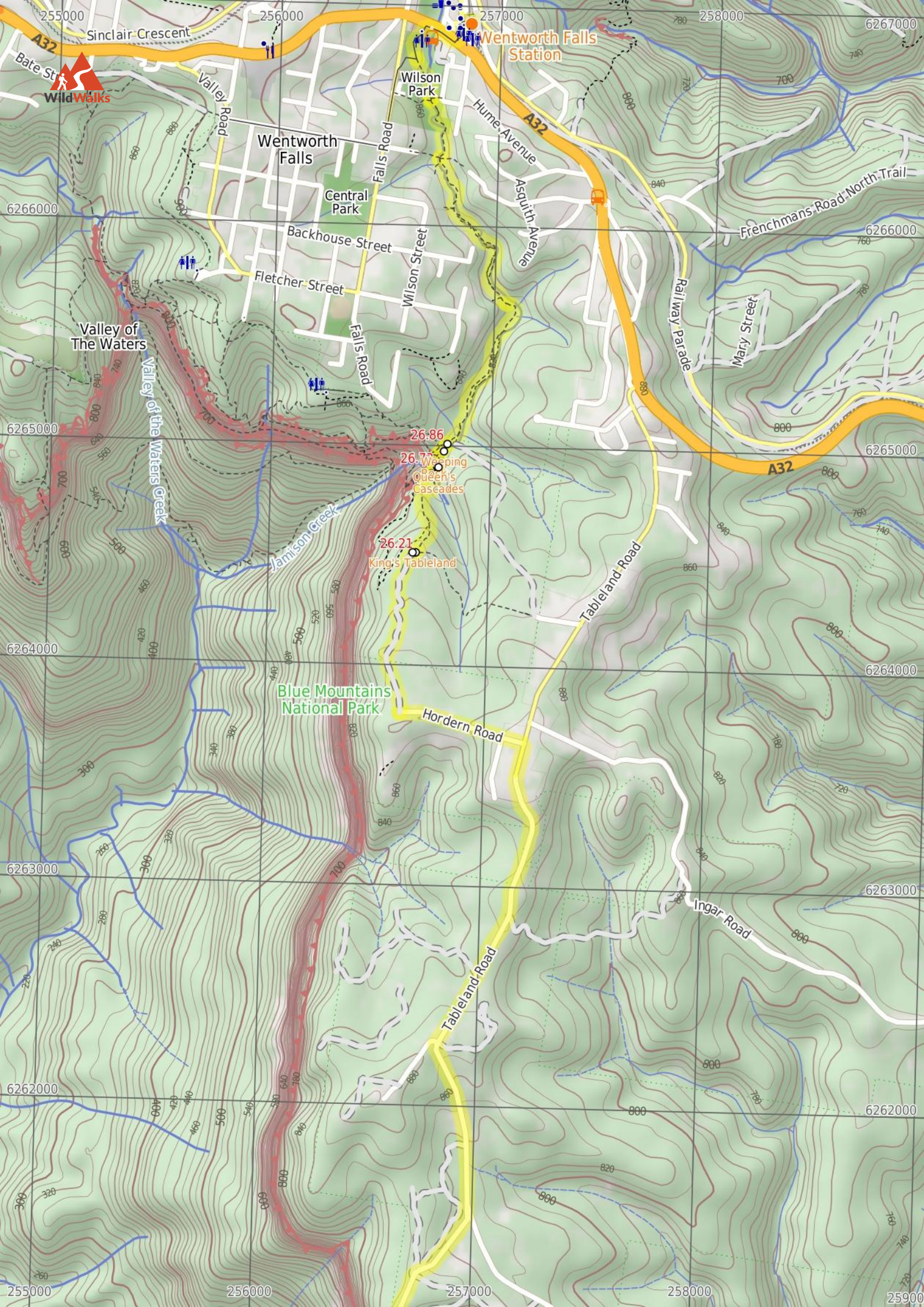
Continue straight: From the the archway in Wilson Park, this walk heads away from the tennis courts, keeping the creek on the right. At the far end of the park, the walk comes to the Great Western Highway and turns right. After about 150m, this walk crosses the highway at the traffic lights and heads up Station St, past the shops and up to Wentworth Falls Railway Station on the right.



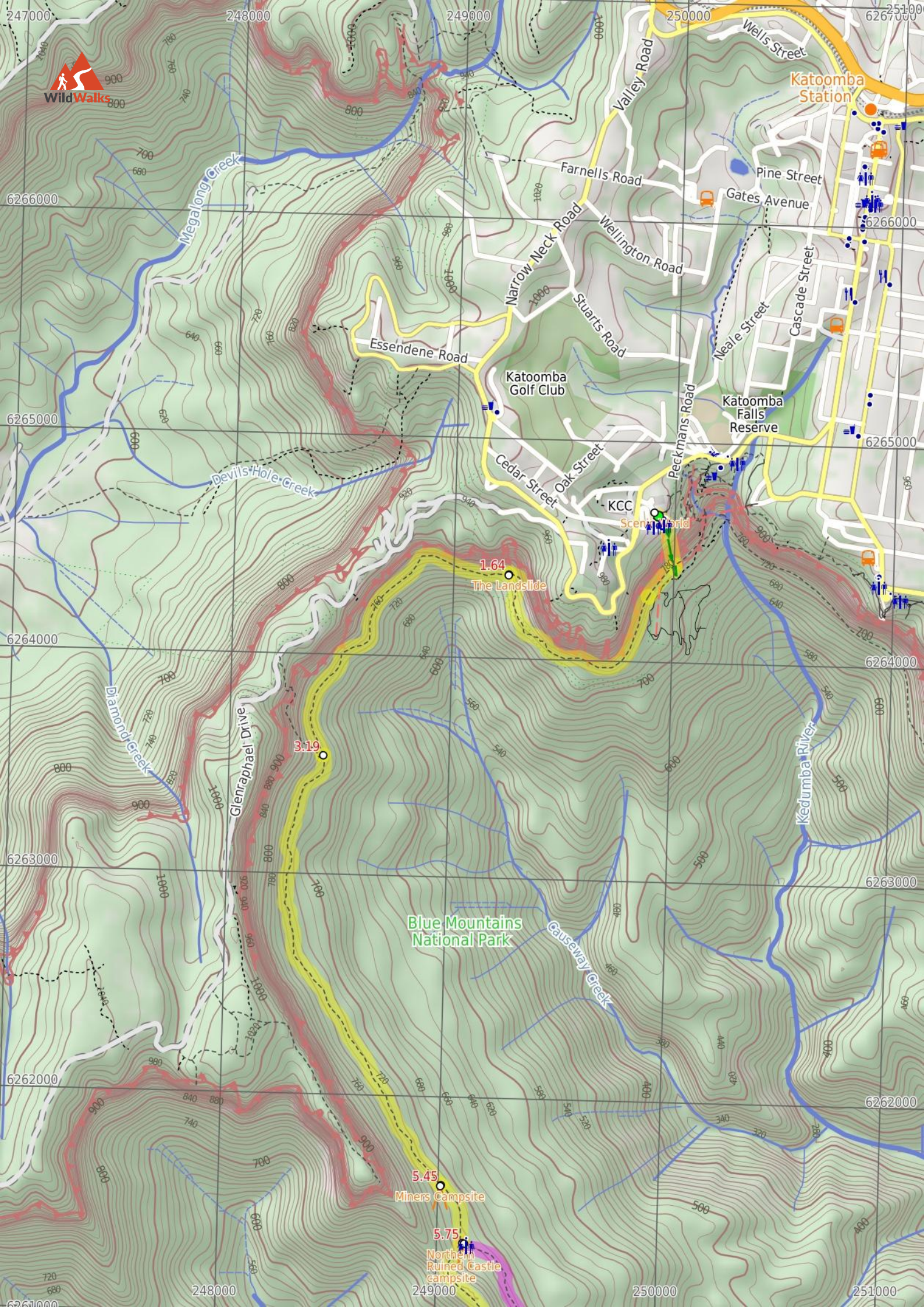


WildWalks

26.86
26.77
Queen's Cascades



26.86
26.77
26.75
26.71
26.70
26.69
26.68
26.67
26.66
26.65
26.64
26.63
26.62
26.61
26.60
26.59
26.58
26.57
26.56
26.55
26.54
26.53
26.52
26.51
26.50
26.49
26.48
26.47
26.46
26.45
26.44
26.43
26.42
26.41
26.40
26.39
26.38
26.37
26.36
26.35
26.34
26.33
26.32
26.31
26.30
26.29
26.28
26.27
26.26
26.25
26.24
26.23
26.22
26.21
26.20
26.19
26.18
26.17
26.16
26.15
26.14
26.13
26.12
26.11
26.10
26.09
26.08
26.07
26.06
26.05
26.04
26.03
26.02
26.01
26.00
25.99
25.98
25.97
25.96
25.95
25.94
25.93
25.92
25.91
25.90
25.89
25.88
25.87
25.86
25.85
25.84
25.83
25.82
25.81
25.80
25.79
25.78
25.77
25.76
25.75
25.74
25.73
25.72
25.71
25.70
25.69
25.68
25.67
25.66
25.65
25.64
25.63
25.62
25.61
25.60
25.59
25.58
25.57
25.56
25.55
25.54
25.53
25.52
25.51
25.50



Katoomba Station

Katoomba Golf Club

Katoomba Falls Reserve

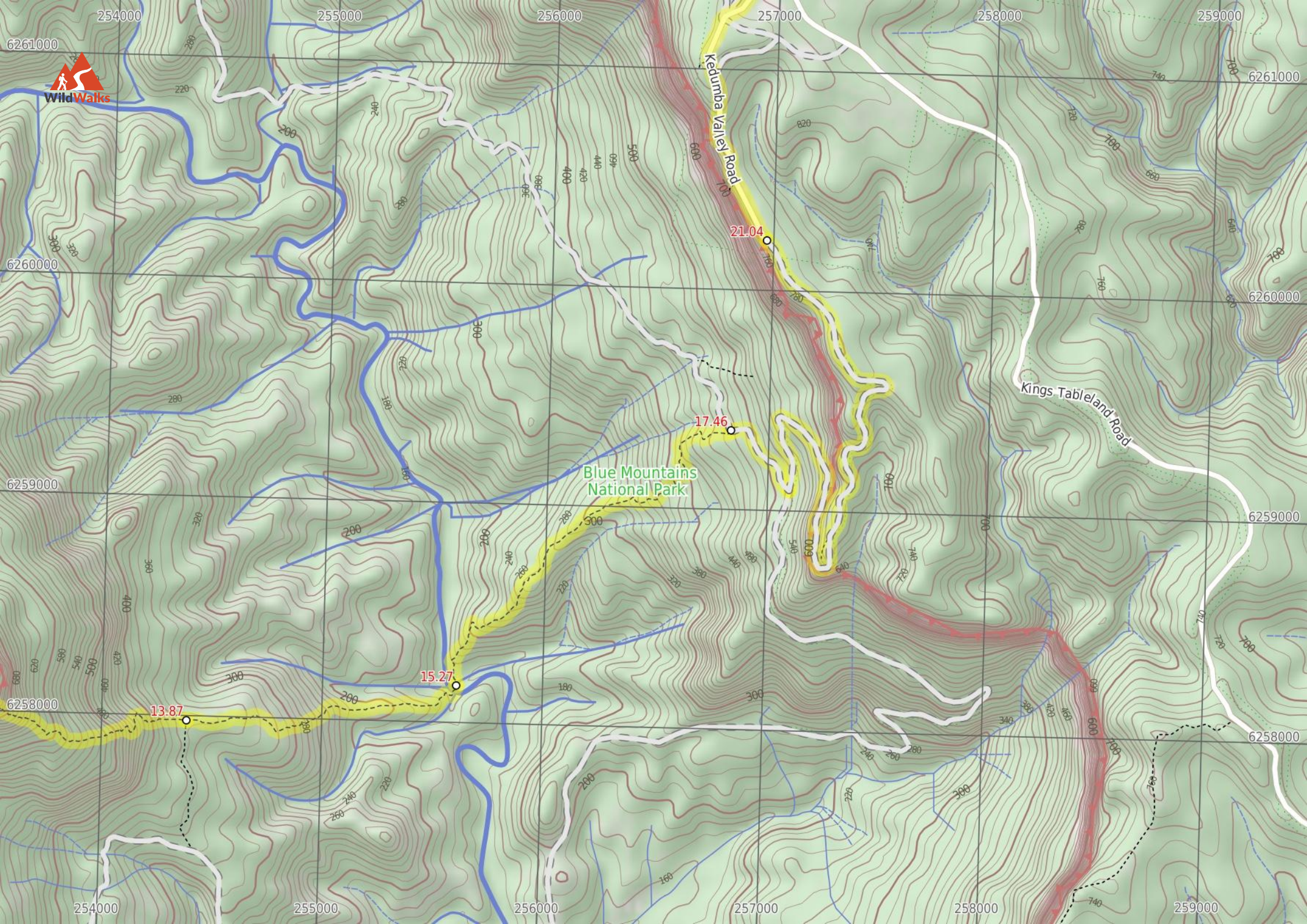
Blue Mountains National Park

1.64
The Landslide

3.19

5.45
Miners Campsite

5.75
Northern Ruined Castle campsite



Blue Mountains National Park

Kedumba Valley Road

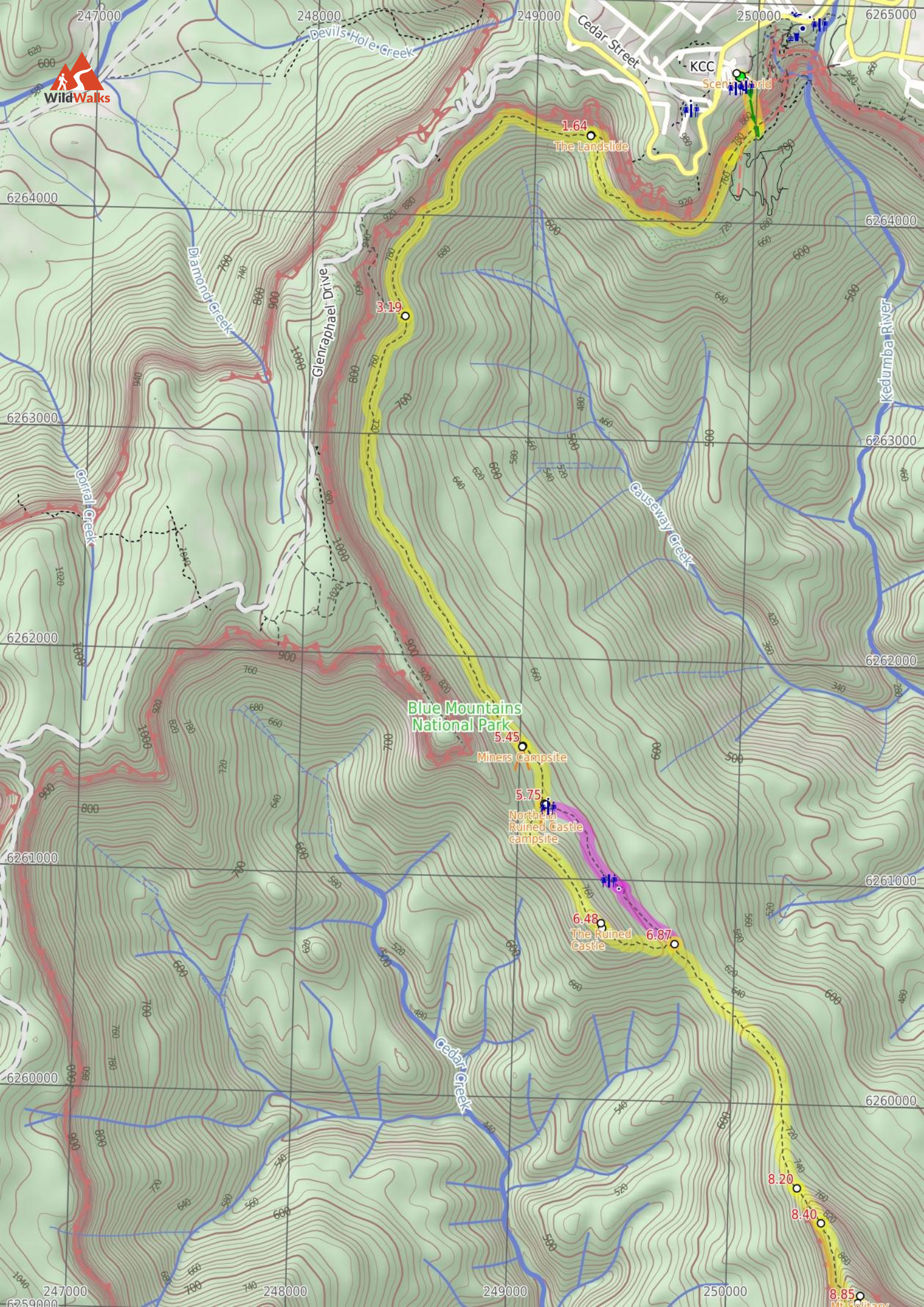
Kings Tableland Road

13.87

15.27

17.46

21.04



WildWalks

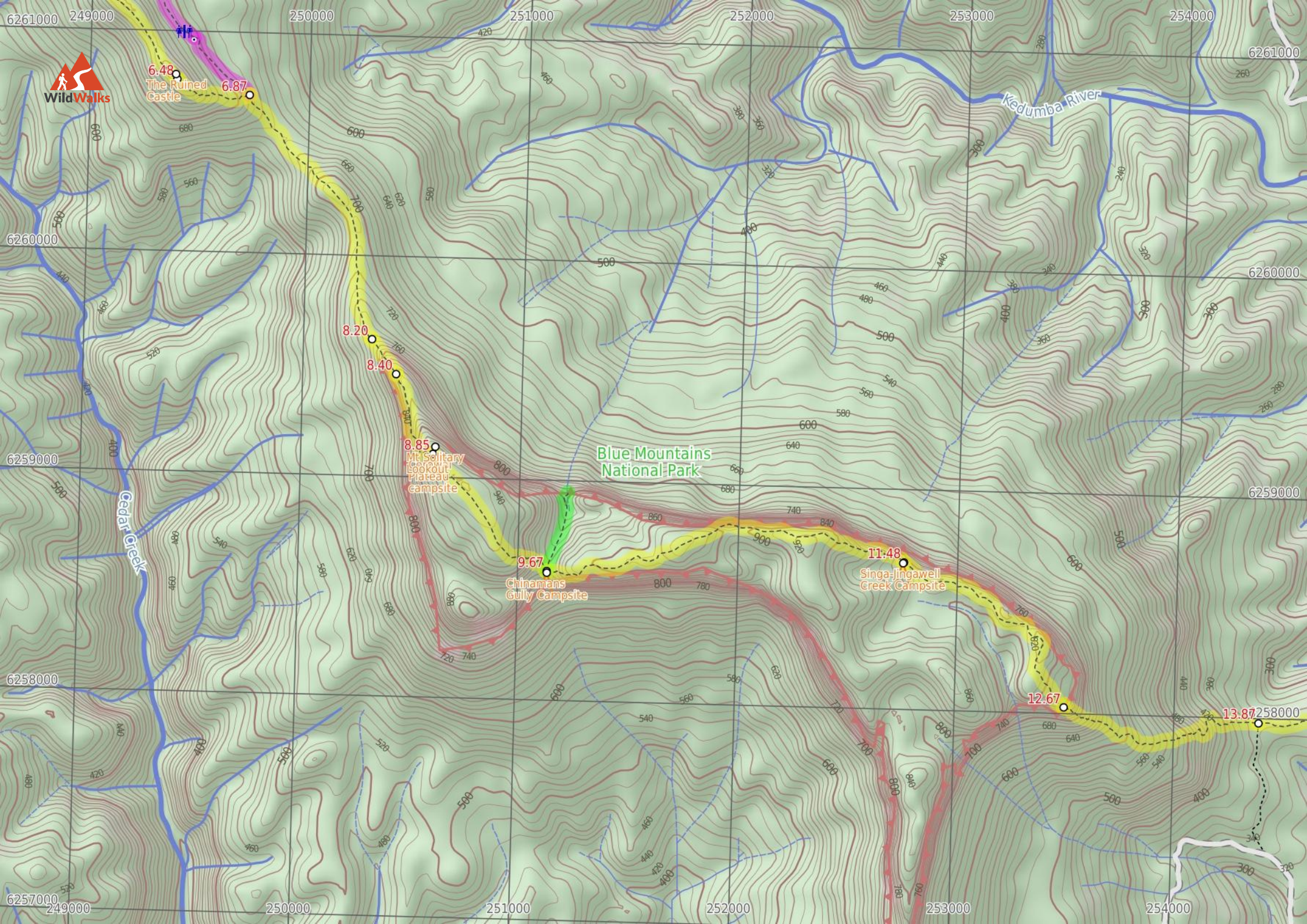
Blue Mountains National Park

Miners Campsite

Northern Ruined Castle campsite

The Ruined Castle

Mt. Solitary



6.48
The Ruined Castle
6.87

8.20
8.40

8.85
Mt Solitary
Lookout
Plateau
campsite

9.67
Chinamans
Gully Campsite

Blue Mountains
National Park

11.48
Singa-Jingawell
Creek Campsite

12.67

13.87

Cedar Creek

Kedumba River

Summary navigation sheet for the Katoomba to Wentworth Falls via the Jamison Valley



km	From	Up/Dwn	Length	Initial directions (Use full tracknotes and maps for more detail)
Start	Scenic World -33.7286,150.301 (GR Katoomba, 499647)	183 -388	1.6 km 1 hr 12 mins	From Scenic World, this walk goes down the cliffs using the Scenic Railway.
1.64	Landslide -33.731,150.2936 (GR Katoomba, 493644)	128 -123	1.6 km 42 mins	Continue straight: From the eastern side of the Landslide, the walk heads across the face of the landslide (keeping the cliff on the right).
3.19	Bottom of Golden Staircase -33.7384,150.2845 (GR Katoomba, 484635)	104 -129	2.3 km 51 mins	Continue straight: From the intersection, this walk follows the 'Federal Pass - Ruined Castle' sign along the flat wide track, keeping the valley to your left.
5.45	Miners Campsite -33.756,150.2903 (GR Jamison, 490616)	16 -11	300 m 7 mins	Continue straight: From the miners campsite, this walk follows the clear track south-west, keeping the valley to your left.
5.75	Northern Ruined Castle campsite -33.7584,150.2913 (GR Jamison, 491613)	22 -77	930 m 23 mins	Alternate Route Northern Ruined Castle campsite. Continue straight: From the intersection, this walk follows the 'Mount Solitary' sign past the campsite (on your left) and past the 'Warning - Remote area indistinct route steep terrain - Exposed climbing loose surf...
5.75	Northern Ruined Castle campsite -33.7584,150.2913 (GR Jamison, 491613)	82 -17	730 m 20 mins	Turn right: From the intersection, this walk follows the 'Ruined Castle' sign uphill along the eroded track and soon passes the yellow 'Warning - Remote area indistinct route steep terrain - Exposed climbing loose s...
6.48	Ruined Castle -33.7635,150.2942 (GR Jamison, 494608)	1 -123	390 m 12 mins	Continue straight: From near the summit of Ruined Castle, this walk heads south-east along the main ridgeline, initially keeping the rock wall to your left.
6.87	Intersection South of Ruined Castle -33.7641,150.2977 (GR Jamison, 497607)	132 -38	1.3 km 35 mins	Turn right: From the intersection, this walk follows the 'Mount Solitary' sign gently downhill along the fairly narrow track, keeping the main valley to your left.
8.20	Bottom of Korrowall Knife-edge -33.7741,150.3037 (GR Jamison, 503596)	86 -2	200 m 12 mins	Continue straight: From the base of the rocks, this walk starts the arduous climb up the Korrowall Knife-edge.
8.40	Top of Korrowall Knife-edge -33.7756,150.3049 (GR Jamison, 504595)	119 -15	450 m 19 mins	Continue straight: From the top of Korrowall Knife-edge, this walk heads south following a worn track that initially heads steeply down beside the large rock wall (keeping the wall to your left).
8.85	Corowal Plateau campsite -33.7788,150.3067 (GR Jamison, 506591)	8 -120	820 m 19 mins	Veer right: From the campsite, this walk heads south-east, following the mostly flat track along the top of the ridge through the she oak forest.
9.67	Chinamans Gully campsite -33.7836,150.3123 (GR Jamison, 511586)	0 -50	390 m 8 mins	Optional sidetrip to Chinamans Gully view. Turn left : From Chinamans Gully campsite, this walk follows the track north, keeping the rock walls to you right.
9.67	End of day 1 -33.7836,150.3123 (GR Jamison, 511586)	0 0	0 m	This is the planned overnight stay for the end of day 1, happy camping.
9.67	Chinamans Gully campsite -33.7836,150.3123 (GR Jamison, 511586)	179 -206	1.8 km 55 mins	Continue straight: From the large campsite at the top of Chinamans Gully, this walk heads east up the gully, initially keeping the large main rock to your right (and Chinamans Gully to your left).
11.48	Singa-Jingawell Creek Campsite -33.7833,150.3298 (GR Jamison, 528587)	61 -105	1.2 km 29 mins	Continue straight: From Singa-Jingawell Creek Campsite, this walk heads south-east, initially keeping the rock wall to your left.
12.67	Solitary Pass -33.7892,150.3376 (GR Jamison, 535580)	11 -428	1.2 km 40 mins	Turn left : From the saddle, this walk follows the eroded track very steeply down the gully to the north.
13.87	Int of Kedumba Camping and Solitary Tracks -33.7899,150.3472 (GR Jamison, 544580)	2 -206	1.4 km 31 mins	Continue straight: From the intersection and campsite, this walk follows the 'Kedumba Pass' and 'Kedumba River' signs west, gently downhill along the ridge.
15.27	Kedumba River -33.7884,150.3605 (GR Jamison, 556582)	345 -17	2.2 km 1 hr 8 mins	Continue straight: From the Kedumba River crossing, this walk follows the track (sometimes marked with a rock cairn) north, up the embankment and away from the river.
17.46	Int of Kedumba River track and Sublime Point trail -33.778,150.3739 (GR Jamison, 568594)	388 -75	3.6 km 1 hr 36 mins	Turn right: From the intersection, this walk follows the 'Wentworth Falls' sign uphill along the wide management trail as it bends left.

Summary navigation sheet for the Katoomba to Wentworth Falls via the Jamison Valley



km	From	Up/Dwn	Length	Initial directions (Use full tracknotes and maps for more detail)
21.04	End of Kedumba River Rd -33.7702,150.3757 (GR Jamison, 570602)	163 -102	5.2 km 1 hr 41 mins	Continue straight: From the end of Kedumba River Rd at the large archway, this walk heads north along the wide dirt road.
26.21	King's Tableland Intersection -33.7315,150.3737 (GR Katoomba, 567645)	7 -63	510 m 13 mins	Veer left: From the intersection, this walk follows the 'Rocket Point Track' sign north along the smaller management trail.
26.73	Top of Wentworth Falls -33.728,150.3747 (GR Katoomba, 568649)	10 -3	100 m 2 mins	Continue straight: From top of Wentworth Falls, this walk crosses the creek on the stepping stones keeping the view to the left (the creek may be impassable after rain).
26.83	Weeping Rock waterfall -33.7273,150.375 (GR Katoomba, 568650)	2 0	40 m 1 mins	Continue straight: From the bottom of Weeping Rock, this walk heads up the metal staircase (with the falls to the right).
26.86	Int of Charles Darwin and Weeping Rock Tracks -33.7271,150.3752 (GR Katoomba, 568650)	116 -58	2.7 km 51 mins	Veer right: From the intersection, this walk heads alongside Jamison Creek (creek to the right) following the signs along the Charles Darwin Walk.